

# The IXC Inc.

Going the Distance for You!

## PATHFINDER 100

Multi Protocol – Intelligent CPE



### Highlights

- Optimized for real-time data transmission over T1
- Supports Ethernet, MPLS, TCP/IP, Frame Relay and ATM
- Ethernet over T1 P2P and WAN Services
- 4 x T1s plus a Single DS3
- Provides between 2MB and 100MB Ethernet speeds using ULTRA E™ Ethernet
- Compact 1U Rack Mount Chassis
- Lower Power Consumption Embedded Processor
- Automated Test and Turn Up
- Hardware based real time encryption - optional

### Description

The Pathfinder box provides end-users with an affordable protocol agnostic T1 bonding box that comes with a wealth of built in automated services.

Pathfinder 100 is a 1U rack mounted chassis that comes configured with 4 T1/E1/J1 ports that can be used separately or bonded together to look like a larger pipe. The unit also has a built in DS3 interface for customer's needing larger bandwidths.

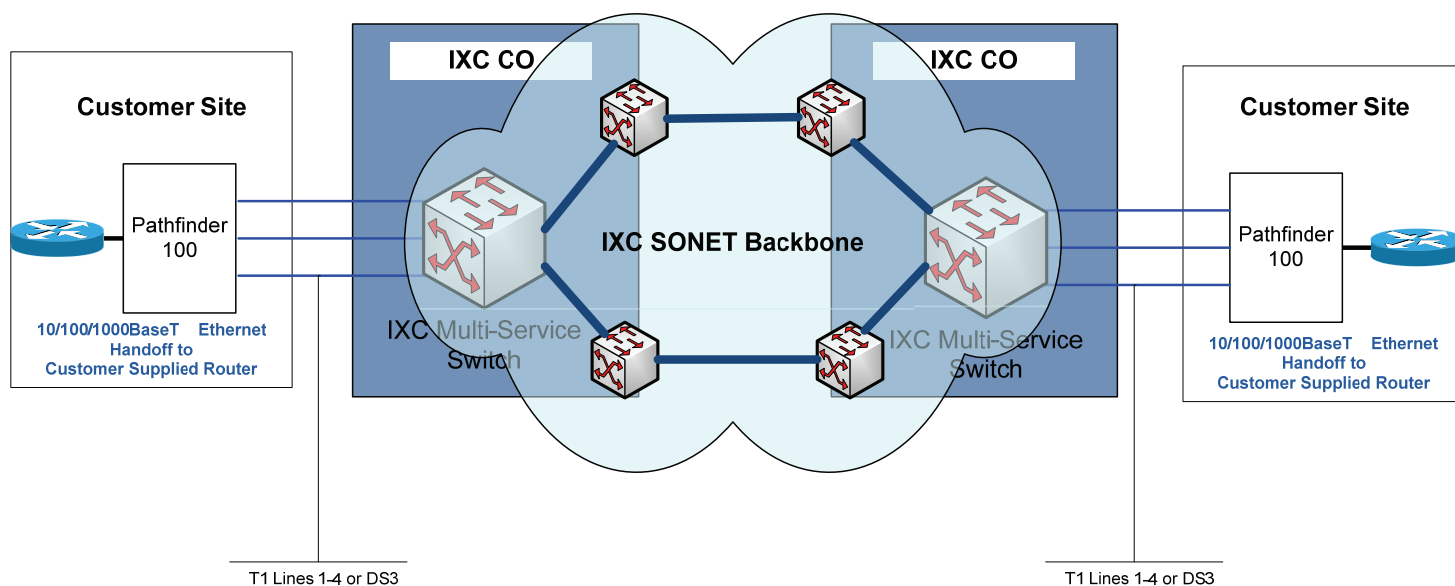
A 10/100/1000 BaseT interface allows simple plug and play insertion into customer LAN environments. Pathfinder is a multi-protocol device providing TDM for high QoS real time applications, Frame Relay for legacy applications and The IXC's own ULTRA E™ WAN optimized Ethernet which allows the device to provide 10 BaseT performance over just 3 T1s.

A simple front panel interface and lower power consumption CPU make the Pathfinder 100 easy to use and easy to own! Built in automated test and turn up, QoS management and assurance, auto audit, and remote maintenance and support functions make the Pathfinder the premier Plug and Play CPE for customers desiring TDM based access and Private Line P2P or WAN services.

# Technical Specifications

## Standard Features

- Physical Interfaces:** DS3 (BNC), 4 xT1(RJ48C), 10/100/1000 BaseT (RJ45), USB, RS232, RS 485
- Protocols Supported:**
- Ethernet, Ultra E™, IP, MPLS, ATM (AAL 0,1,5), Frame Relay.
  - Ultra E™, ATM, and Frame relay are WAN facing protocols
  - LAN interaction via 10/100/1000Base T—typical, other options available.
- Fault Monitoring:** Automatic remote fault monitoring and reporting via The IXC network.
- Front Panel control:** Pushbutton Power on/off, LED's for status indication
- Physical Size and Weight:** 1RU (1.75"x19"x14")  
12 lbs
- Power Supply:** Auto sensing, auto ranging 90 to 240 VAC  
50/60 Hz Universal Power Supply  
< 45 Watts Typical draw during normal operations
- Operating Conditions:** Ambient Temperature: 0– +40C
- Regulatory** CE, FCC, UL and RoHS compliant



Prices, specifications, and product availability subject to change without notice. All trademarks acknowledged. All rights reserved. Copyright The IXC Inc. 2007